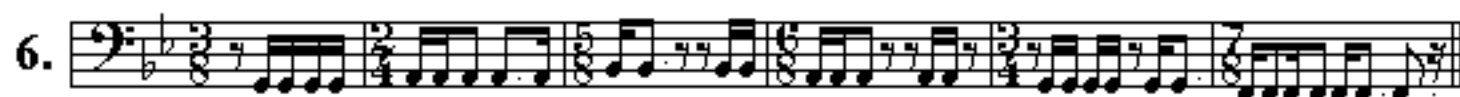
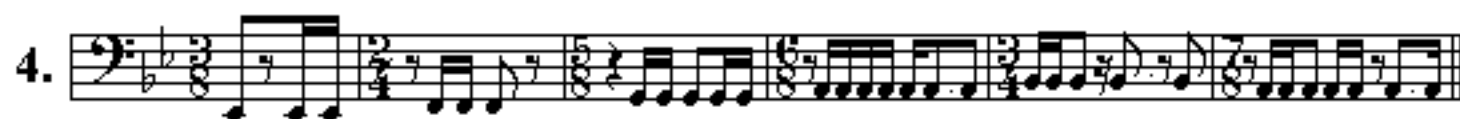


# Power Grid 22C

## Basses

A B C D E F



**Note:** Do lines horizontally across only.

For evaluation purposes, only the preparatory will be counted out loud in Power Grids 21C & 22C. After that (due to the combination of meters), the students will continue the test or exercise without an a metronome. Try to keep the tempo at 60 beats per quarter note, or 120 beats per eighth note, per minute.

# Power Grid 22C

# C Instruments

A B C D E F

1.

2.

3.

4.

5.

6.

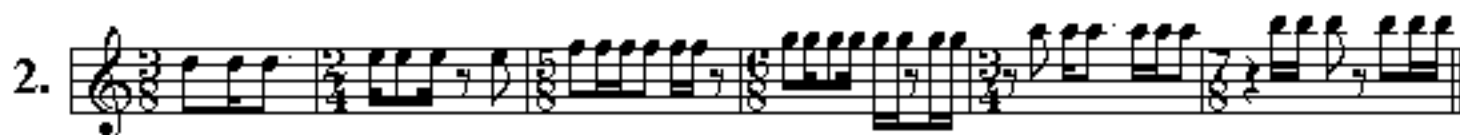
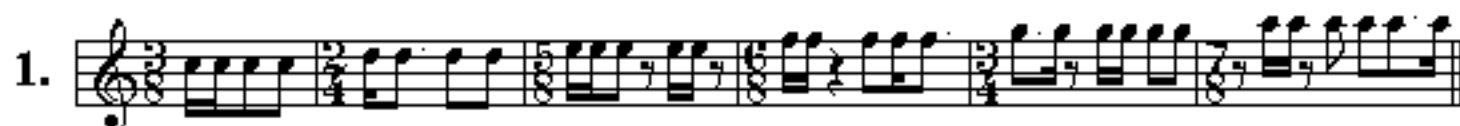
**Note: Do lines horizontally across only.**

For evaluation purposes, only the preparatory will be counted out loud in Power Grids 21C & 22C. After that (due to the combination of meters), the students will continue the test or exercise without an a metronome. Try to keep the tempo at 60 beats per quarter note, or 120 beats per eighth note, per minute.

# Power Grid 22C

Bb Tenor Sax

A B C D E F



**Note: Do lines horizontally across only.**

For evaluation purposes, only the preparatory will be counted out loud in Power Grids 21C & 22C. After that (due to the combination of meters), the students will continue the test or exercise without an a metronome. Try to keep the tempo at 60 beats per quarter note, or 120 beats per eighth note, per minute.

# Power Grid 22C

## French Horn

A B C D E F



**Note: Do lines horizontally across only.**

For evaluation purposes, only the preparatory will be counted out loud in Power Grids 21C & 22C. After that (due to the combination of meters), the students will continue the test or exercise without an a metronome. Try to keep the tempo at 60 beats per quarter note, or 120 beats per eighth note, per minute.

# Power Grid 22C

## French Horn

A B C D E F



Note: See back of book for alternate "Power Grid" one octave lower.

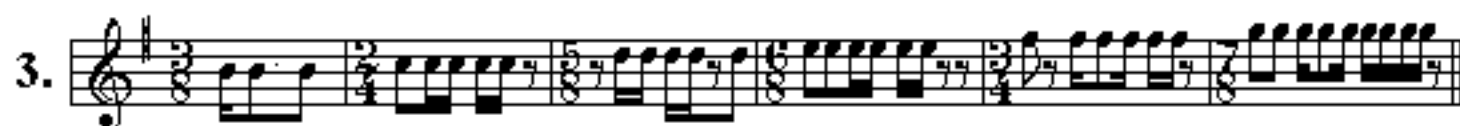
Note: Do lines horizontally across only.

For evaluation purposes, only the preparatory will be counted out loud in Power Grids 21C & 22C. After that (due to the combination of meters), the students will continue the test or exercise without an a metronome. Try to keep the tempo at 60 beats per quarter note, or 120 beats per eighth note, per minute.

# Power Grid 22C

## E♭ Instruments

A B C D E F



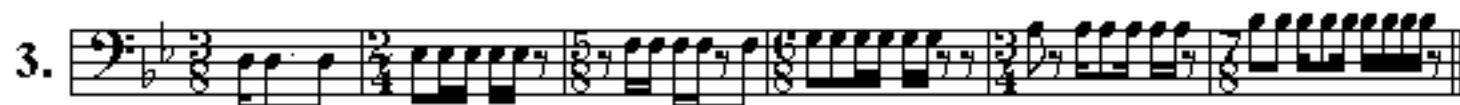
**Note: Do lines horizontally across only.**

For evaluation purposes, only the preparatory will be counted out loud in Power Grids 21C & 22C. After that (due to the combination of meters), the students will continue the test or exercise without an a metronome. Try to keep the tempo at 60 beats per quarter note, or 120 beats per eighth note, per minute.

# Power Grid 22C

Bass Clef

A B C D E F



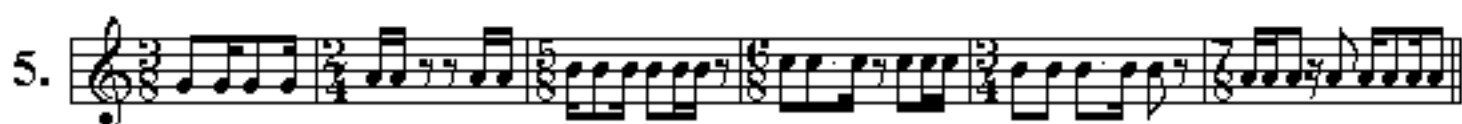
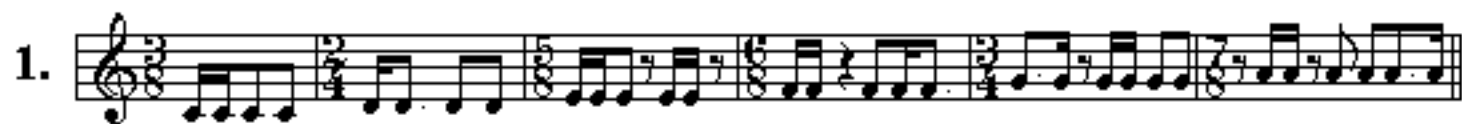
**Note: Do lines horizontally across only.**

For evaluation purposes, only the preparatory will be counted out loud in Power Grids 21C & 22C. After that (due to the combination of meters), the students will continue the test or exercise without an a metronome. Try to keep the tempo at 60 beats per quarter note, or 120 beats per eighth note, per minute.

# Power Grid 22C

Bb Instruments

A B C D E F



**Note: Do lines horizontally across only.**

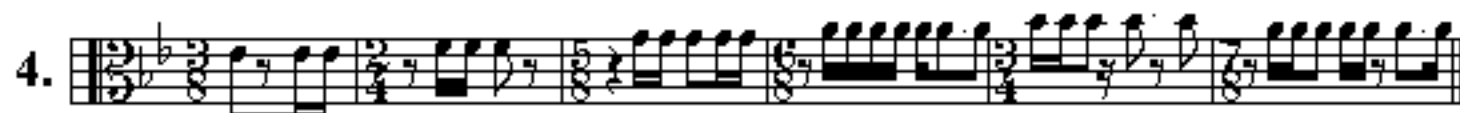
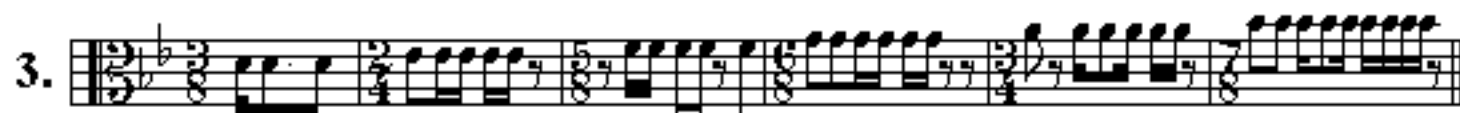
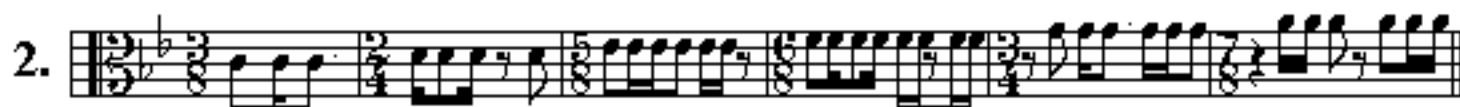
For evaluation purposes, only the preparatory will be counted out loud in Power Grids 21C & 22C. After that (due to the combination of meters), the students will continue the test or exercise without an a metronome. Try to keep the tempo at 60 beats per quarter note, or 120 beats per eighth note, per minute.



# Power Grid 22C

Viola

A B C D E F



**Note: Do lines horizontally across only.**

For evaluation purposes, only the preparatory will be counted out loud in Power Grids 21C & 22C. After that (due to the combination of meters), the students will continue the test or exercise without an a metronome. Try to keep the tempo at 60 beats per quarter note, or 120 beats per eighth note, per minute.