

2B. "Play" Drills A

Basses

Note: If the "Say" and "Play" Drills "A" are initially too fast paced, move on to the "B" or Supplemental drills.

1. 

2. 

3. 

4. 

5. 

6. 

7. 

8. 

9. 

"Looks Different, Sounds Same"

10. 

2B. "Play" Drills A

Bb Instruments

Note: If the "Say" and "Play" Drills "A" are initially too fast paced, move on to the "B" or Supplemental drills.

1. 


2. 


3. 

4. 

5. 


6. 

7. 

8. 

9. 

"Looks Different, Sounds Same"

10. 

2B. "Play" Drills A

Bass Clef

Note: If the "Say" and "Play" Drills "A" are initially too fast paced, move on to the "B" or Supplemental drills.

1.

2.

3.

4.

5.

6.

7.

8.

9.

"Looks Different, Sounds Same"

10.

2B. "Play" Drills A

E♭ Instruments

Note: If the "Say" and "Play" Drills "A" are initially too fast paced, move on to the "B" or Supplemental drills.

1. 

2. 

3. 

4. 

5. 

6. 

7. 

8. 

9. 

"Looks Different, Sounds Same"

10. 

2B. "Play" Drills A

French Horn

Note: If the "Say" and "Play" Drills "A" are initially too fast paced, move on to the "B" or Supplemental drills.

1. 

2. 

3. 

4. 

5. 

6. 

7. 

8. 

9. 

"Looks Different, Sounds Same"


10. 

2B. "Play" Drills A

Bb Tenor Sax

Note: If the "Say" and "Play" Drills "A" are initially too fast paced, move on to the "B" or Supplemental drills.

1. 

2. 

3. 

4. 

5. 

6. 

7. 

8. 

9. 

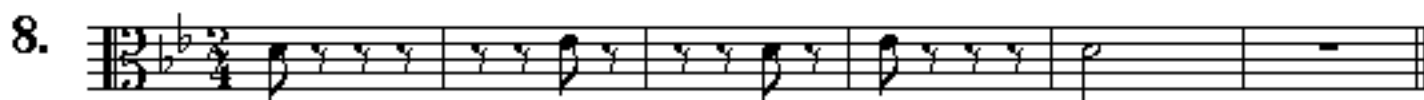
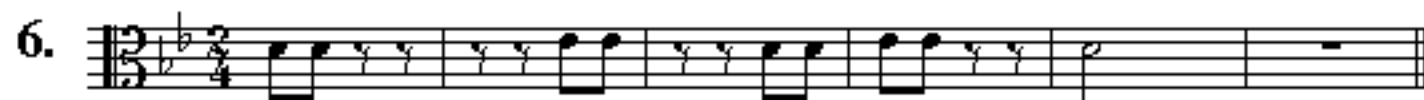
"Looks Different, Sounds Same"

10. 

2B. "Play" Drills A

Viola

Note: If the "Say" and "Play" Drills "A" are initially too fast paced, move on to the "B" or Supplemental drills.



"Looks Different, Sounds Same"



2B. "Play" Drills A

C Instruments

1. 

2. 

3. 


4. 

5. 

6. 

7. 

8. 

9. 

"Looks Different, Sounds Same"

10. 